

### Formula Page

**To calculate surface area:**

- 1) Find the area of each side of the figure.
- 2) Add all of the areas together.

area of rectangle:  $l \cdot w$

area of square:  $s \cdot s$

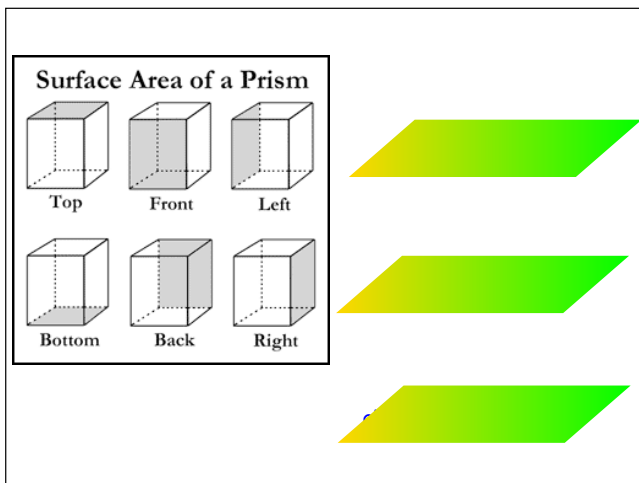
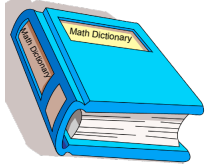
area of circle:  $\pi \cdot r \cdot r$

area of triangle: PICK ONE OF THE FOLLOWING:

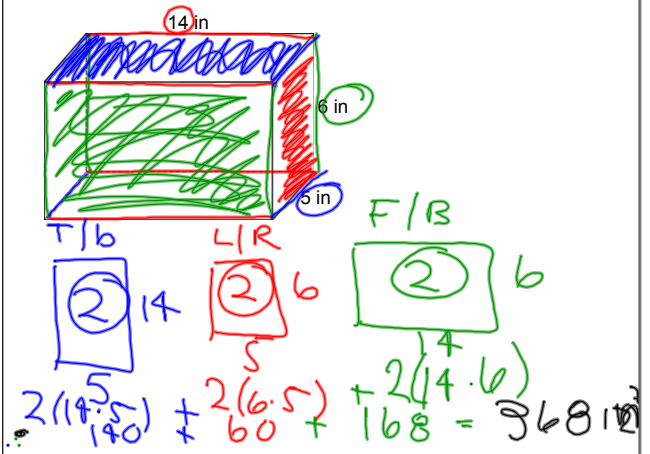
$0.5 \cdot b \cdot h$

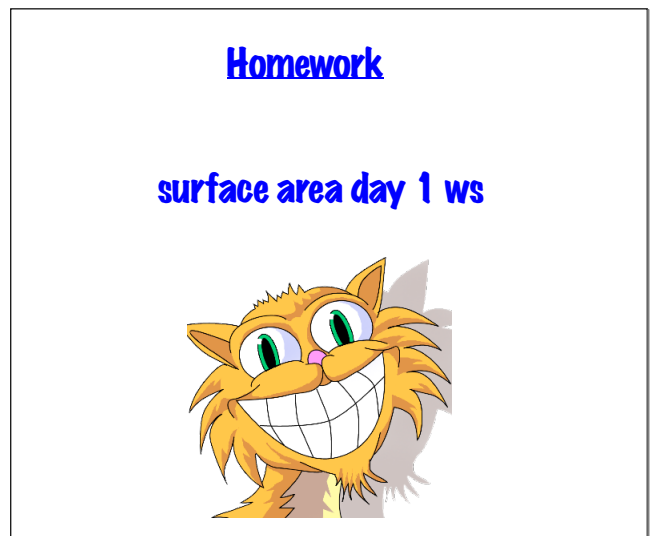
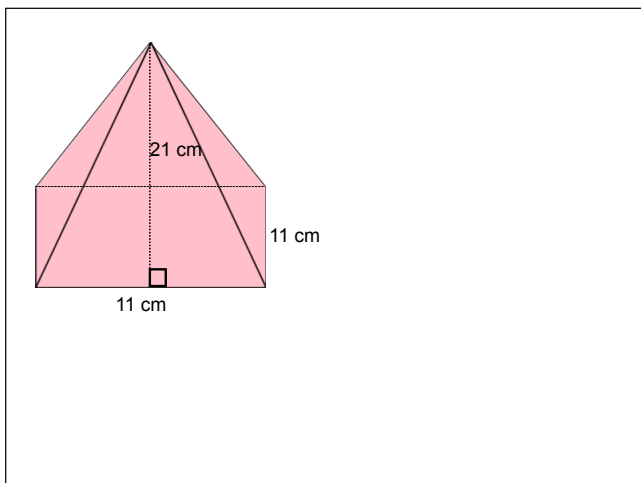
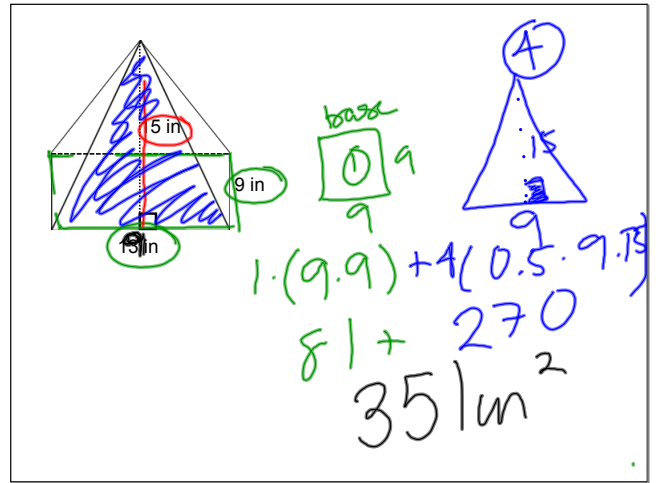
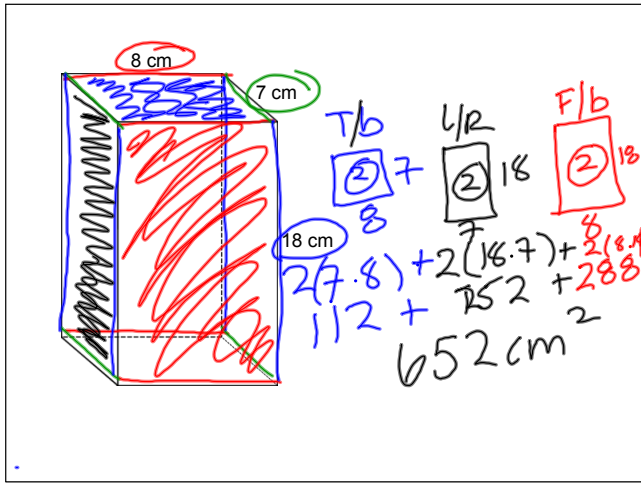
OR  $\frac{b \cdot h}{2}$

OR  $\frac{1}{2} \cdot b \cdot h$



### Example 1





## Homework

surface area day 1 ws

